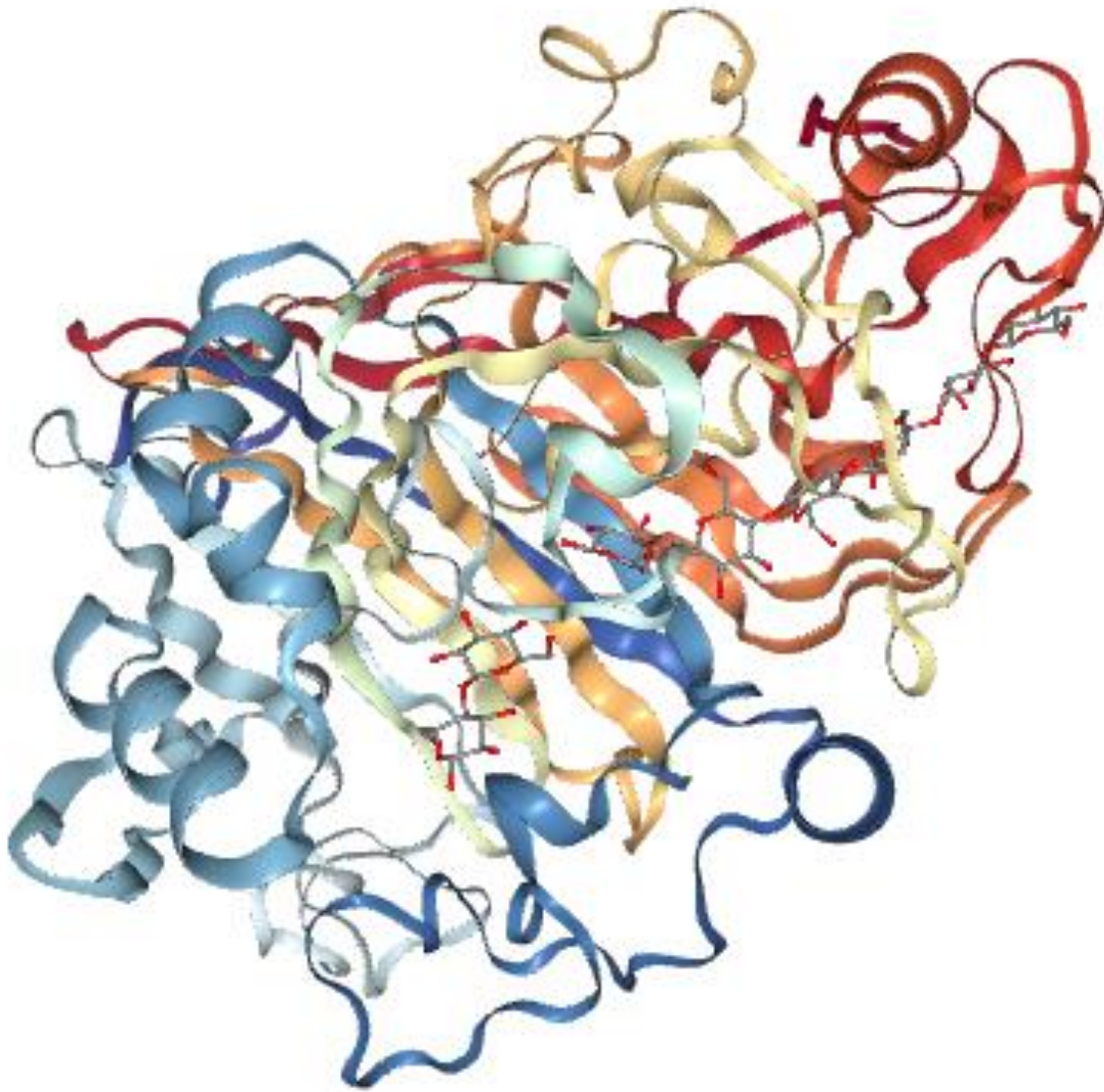


MSD

Medical Science & Discovery



Medical Science and Discovery (<http://www.medscidiscovery.com>) is an international open access, peer-reviewed scientific research journal that provides rapid publication of articles in all disciplines of human health, clinical and basic medical sciences such as Biophysics, Biochemistry, Histology, Physiology, Genetics, Pathology, Toxicology, Anatomical Sciences, Pharmacology, Embryology, Internal and Surgical Medicine.

The policy of top priority of MSD is to put forward and highlight medical innovations and inspiring patents.

MSD offers an exceptionally fast publication schedule including prompt peer-review by the experts in the field and immediate publication upon acceptance. The editorial board aims at reviewing the submitted articles as fast as possible and promptly including them in the forthcoming issues.

This journal is published under ethical publishing policy of international scientific Bioethics and publication rules.

MSD supports the Open Access Initiative. Abstracts and full texts (HTML and PDF format) of all articles published by MSD are freely accessible to everyone immediately upon publication.

Indexed Databases: Chemical Abstracts (CAS), Index Copernicus, Open Air, ULRICHS Database, ProQuest, Advanced Science Index, Turkish Citation Index, Research Bible, Scholar Google, NLM Catalog

Medical Science and Discovery is an international open access, peer-reviewed scientific research journal.

ISSN: 2148-6832 (Print)

E-ISSN: 2148-6832 (Online)

Category: Multi Disciplinary Health Science Journal

Abbreviated key title: Med. Sci. Discov.

Frequency: Monthly

Review System: Double Blind Peer Review

Circulation: Globally, Online, Printed

Article Processing Charge (APC): Free

Licensing: CC-BY-NC 4.0 International License Environmental

Editor-in-Chief: Assoc. Prof. Dr. Dr. Ahmad Rajabzadeh, Anatomical Department of Lorestan, University of Medical Sciences, Tabriz, Iran

Established: 30.04.2014

Web address: www.medscidiscovery.com

E-mail : [editor \[at\] medscidiscovery.com](mailto:editor@medscidiscovery.com)

Phone : +44 776 090 2125

Design and preparation of PDFs, Language editing, Web site design, Graphical design Services of international Journal of Medical Science and Discovery has been contracted with Lycia Press LONDON, UK (as Publisher), by the MSD Board of Directors

Publisher: Lycia Press London UK.

Address: 3rd Floor 86 - 90 Paul Street, EC2A 4NE, London, UK

Web address: www.lycians.com

Phone : +44 776 090 2125

E-mail : [office \[at\] lycians.com](mailto:office@lycians.com)

E-mail : [info \[at\] lycians.com](mailto:info@lycians.com)

Honorary Editors

We are very grateful to our honorary editors for their contribution to science

Prof. Dr. Aziz SANCAR
University of North Carolina, Dept. of Biochemistry-Biophysics, Chapel Hill, NC, USA
E-mail: aziz_sancar [at] med.unc.edu

Prof. Dr. Giancarlo BAROLAT
Barolat Institute, 1721 E 19th Ave #434, Denver, CO 80218, USA
E-mail: gbarolat [at] verizone.net

Prof. Dr. Joyce REARDON
University of North Carolina, Dept. of Biochemistry-Biophysics, Chapel Hill, NC, USA
E-mail: biocjtr [at] gmail.com

Prof. Dr. Metin TULGAR
Yuzuncu Yil University, School of Medicine, Dept. of Biophysics, Van, Turkey
E-mail: prof.tulgar [at] gmail.com

Editor in Chief

Assoc. Prof. Dr. Asghar Rajabzadeh
Anatomical Department, Lorestan University of Medical Sciences, Khorramabad, Iran
E-mail: editor [at] medscidiscovery.com
E-mail: dr.a_rajabzadeh [at] yahoo.com
Phone: +98 938 472 7705

Deputy Editors

Assoc. Prof. Dr. Michael George KEMP
Wright State University, Biological Sciences Bldg II 148, 3640 Colonel Glenn Hwy, Dayton, OH 45435-0001 USA
E-mail: mike.kemp [at] wright.edu
Fax: +1 (937) 775-2614

Editorial Board Members

Prof. Dr. Arash KHAKI
Islamic Azad university, Tabriz branch, Dept. of Pathology, Tabriz Iran
E-mail: arashkhaki [at] yahoo.com

Ph.D. Nezahat Ozlem ARAT
5380 Avenue du Parc Apt 4, H2V4G7, Montreal, QC, Canada
E-mail: aratzlem[at] gmail.com

Prof. Dr. Nobuo INOTSUME (Vice-president)
Hokkaido Pharmaceutical University, Clinical Pharmacology, Hokkaido AC, JAPAN
E-mail: nobuo_inotsume [at] hokuyakudai.ac.jp

Ph.D. Ozdemirhan SERCIN
Interdisciplinary Research Institute, Université Libre de Bruxelles, Belgium
E-mail: ozdemirhan.sercin [at] gmail.com

Ph.D. Shobhan GADDAMEEDHI
Washington State University College of Pharmacy, Dept. of Experimental and Systems Pharmacology, Spokane, WA, USA
E-mail: shobhan.gaddameedhi [at] wsu.edu

Ph.D. Younes El Bouzekri EL IDRISSE
Place Aboubakr, Imm 22, App 6, Bd Fal ould oumeir, Agdal Rabat
E-mail: y.elbouzekri [at] gmail.com

Ph.D. Christopher SCHMITT
University of California, San Francisco Cardiovascular Res. Inst. CA, USA
E-mail: schmittce [at] gmail.com

Ph.D. Yusuf Kemal DEMIR
Research and Development Scientist, Prinst Pharmaceuticals, North Carolina, USA
E-mail: phdykd [at] gmail.com

Lycia Press Editorial Office

Language Editor Elena JALBA
Reading University, London, UK
E-mail: office [at] lycians.com

Contents

Research Article

[Comparing ICD shock ratios between Type 1, Type 2 and non diabetic patients](#)

Selçuk Ayhan, Veli Gökhan Cin, Sabri Abuş/ 275-284

[The association between CONUT score, mRSS, and development of digital ulcers in SSc patients](#)

Firdevs Ulutaş, Veli Çobankara/ 285-290

[Vitamin B12 deficiency in turkish patients with Type 2 Diabetes Mellitus](#)

İsmail Gökhan Kalaycı, Savaş Karataş, Burcu Hacıoğlu/ 291-294

[Examination of factors affecting pain-related self-efficacy in patients with chronic neck pain](#)

Huseyin Atceken, Mehmet DURAY/ 295-301

[The Radiological characteristics and surgical requirements of patients with and without rheumatoid arthritis with low back pain: a multicenter study](#)

Eyüp Çetin, Server İlter, Selman Parlak/ 302-307

[Evaluation of mandibular first molar teeth in the context of immediate implant placement using Cone Beam Computed Tomography](#)

Raif Alan, Javid Isayev/ 308-312

[Horticulture Activities and Mental Wellness in Young Adults During the COVID-19 Pandemic: A Descriptive Correlational Study](#)

Avelino Braña III, Yuvenn Canuto, Klairellen Arhl Casupanan, Eugene Chad Clement, Agripito Isidore Dalisay, Mary Kristine Amboy/ 313-318

[Predicting Long-Term Mortality in Acute Pulmonary Embolism: The Role of RDW Levels](#)

Murat Kerkutluoglu, Anil Sahin, Oguzhan Yucel, Hakan Gunes, Mehmet Birhan Yilmaz, Ali Zorlu/ 319-324

[Analysis of the diagnostic utility of Glasgow-Blatford Score, Rockall Score, AIMS65 Score, BUN-to-albumin ratio and BUN-to-creatinine ratio for predicting the need for transfusion in upper gastrointestinal bleeding](#)

Tahir Talat Yurttaş, Sarper Yılmaz, Başar Cander/ 325-331

[From Patient Perspective: Violence Against Physician: Patients' views on violence to physicians](#)

Olgu Aygün, Özden Gökdemir, Halime Seda Küçükerdem, Ülkü Bulut Batur, Nilgün Özçakar/ 332-340

[Oral Problems and Related Factors in Elderly COVID-19 Patients in an Intensive Care Unit: A Cross-Sectional Study](#)

Emel Tuğrul, İpek Bakımlı/ 341-347

[Comprehensive Evaluation of Occupational Accidents in a Hospital Setting: Insights from L-Type Matrix and Fine-Kinney Risk Assessment Methods](#)

Muhammed Furkan Özden, Furkan Yıldız, Fahriye Naz Erdil, Sarper Yılmaz/ 348-352

[Cerebral Microembolism in Patient with COVID-19](#)

Elif Ünal, Bilgin Öztürk, Uğur Burak Şimşek, Ali Rıza Sonkaya, Ömer Karadaş/ 353-356

Case Reports

[Neuroendocrine Carcinoma of the Breast: Report of A Case](#)

Mehmet Sait Ozsoy, Hakan Baysal, Fatih Buyuker, Begumhan Baysal, Gozde Kir, Orhan Alimoglu/ 357-360