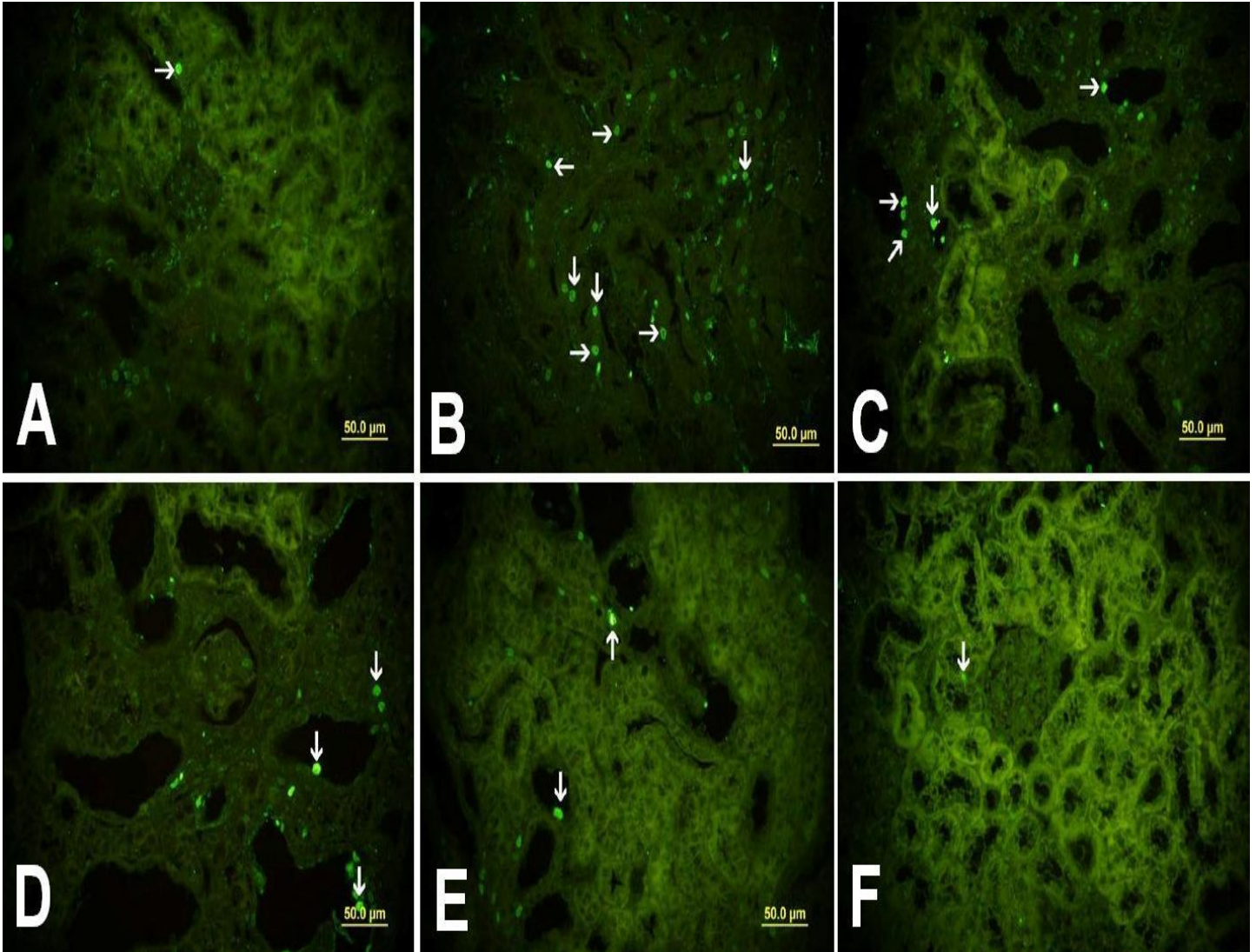


MSD

Medical Science & Discovery



Medical Science and Discovery (<http://www.medscidiscovery.com>) is an international open access, peer-reviewed scientific research journal that provides rapid publication of articles in all disciplines of human health, clinical and basic medical sciences such as Biophysics, Biochemistry, Histology, Physiology, Genetics, Pathology, Toxicology, Anatomical Sciences, Pharmacology, Embryology, Internal and Surgical Medicine.

The policy of top priority of MSD is to put forward and highlight medical innovations and inspiring patents.

MSD offers an exceptionally fast publication schedule including prompt peer-review by the experts in the field and immediate publication upon acceptance. The editorial board aims at reviewing the submitted articles as fast as possible and promptly including them in the forthcoming issues.

This journal is published under ethical publishing policy of international scientific Bioethics and publication rules.

MSD supports the Open Access Initiative. Abstracts and full texts (HTML and PDF format) of all articles published by MSD are freely accessible to everyone immediately upon publication.

Indexed Databases: Chemical Abstracts (CAS), Index Copernicus, Open Air, ULRICHS Database, ProQuest, Advanced Science Index, Turkish Citation Index, Research Bible, Scholar Google, NLM Catalog

Medical Science and Discovery is an international open access, peer-reviewed scientific research journal.

ISSN: 2148-6832 (Print)

E-ISSN: 2148-6832 (Online)

Category: Multi Disciplinary Health Science Journal

Abbreviated key title: Med. Sci. Discov.

Frequency: Monthly

Review System: Double Blind Peer Review

Circulation: Globally, Online, Printed

Article Processing Charge (APC): Free

Licensing: CC-BY-NC 4.0 International License Environmental

Editor-in-Chief: Assoc. Prof. Dr. Dr. Ahmad Rajabzadeh, Anatomical Department of Lorestan, University of Medical Sciences, Tabriz, Iran

Established: 30.04.2014

Web address: www.medscidiscovery.com

E-mail : [editor \[at\] medscidiscovery.com](mailto:editor@medscidiscovery.com)

Phone : +44 776 090 2125

Design and preparation of PDFs, Language editing, Web site design, Graphical design Services of international Journal of Medical Science and Discovery has been contracted with Lycia Press LONDON, UK (as Publisher), by the MSD Board of Directors

Publisher: Lycia Press London UK.

Address: 3rd Floor 86 - 90 Paul Street, EC2A 4NE, London, UK

Web address: www.lycians.com

Phone : +44 776 090 2125

E-mail : [office \[at\] lycians.com](mailto:office@lycians.com)

E-mail : [info \[at\] lycians.com](mailto:info@lycians.com)

Honorary Editors

We are very grateful to our honorary editors for their contribution to science

Prof. Dr. Aziz SANCAR
University of North Caroline, Dept. of Biochemistry-Biophysics, Chapel Hill, NC, USA
E-mail: aziz_sancar [at] med.unc.edu

Prof. Dr. Giancarlo BAROLAT
Barolat Institute, 1721 E 19th Ave #434, Denver, CO 80218, USA
E-mail: gbarolat [at] verizone.net

Prof. Dr. Joyce REARDON
University of North Caroline, Dept. of Biochemistry-Biophysics, Chapel Hill, NC, USA
E-mail: biocjtr [at] gmail.com

Prof. Dr. Metin TULGAR
Yuzuncu Yil University, School of Medicine, Dept. of Biophysics, Van, Turkey
E-mail: prof.tulgar [at] gmail.com

Editor in Chief

Assoc. Prof. Dr. Asghar Rajabzadeh
Anatomical Department, Lorestan University of Medical Sciences, Khorramabad, Iran
E-mail: editor [at] medscidiscovey.com
E-mail: dr.a_rajabzadeh [at] yahoo.com
Phone: +98 938 472 7705

Deputy Editors

Assoc. Prof. Dr. Michael George KEMP
Wright State University, Biological Sciences Bldg II 148, 3640 Colonel Glenn Hwy, Dayton, OH 45435-0001 USA
E-mail: mike.kemp [at] wright.edu
Fax: +1 (937) 775-2614

Editorial Board Members

Prof. Dr. Arash KHAKE, Islamic Azad university ,Tabriz branch ,Dept. of Pathology, Tabriz Iran
E-mail: arashkhaki [at] yahoo.com

Ph.D. Nezahat Ozlem ARAT, 5380 Avenue du Parc Apt 4, H2V4G7, Montreal, QC, Canada
E-mail: aratzlem[at] gmail.com

Prof. Dr. Nobuo INOTSUME (Vice-president), Hokkaido Pharmaceutical University, Clinical Pharmacology, Hokkaido AC, JAPAN
E-mail: nobuo_inotsume [at] hokuyakudai.ac.jp

Ph.D. Ozdemirhan SERCIN, Interdisciplinary Research Institute, Université Libre de Bruxelles, Belgium
E-mail: ozdemirhan.sercin [at] gmail.com

Ph.D. Shobhan GADDAMEEDHI, Washington State University College of Pharmacy, Dept. of Experimental and Systems Pharmacology, Spokane, WA, USA
E-mail: shobhan.gaddameedhi [at] wsu.edu

Ph.D. Younes El Bouzekri EL IDRISSE, Place Aboubakr, Imm 22, App 6, Bd Fal ould oumeir, Agdal Rabat
E-mail: y.elbouzekri [at] gmail.com

Ph.D. Christopher SCHMITT, University of California, San Francisco Cardiovascular Res. Inst. CA, USA
E-mail: schmittce [at] gmail.com

M.D. Ramesh Baradaran Bagheri, Department of Obstetrics and Gynecology, School of Medicine, Alborz University, Alborz, Iran
E-mail: R_Baradaran[at]yahoo.com

Ph.D. Yusuf Kemal DEMIR, Research and Development Scientist, Prinst Pharmaceuticals, North Carolina, USA
E-mail: phdykd [at] gmail.com

Lycia Press Editorial Office

Language Editor Elena JALBA , Reading University, London, UK
E-mail: office [at] lycians.com

Contents

Research Article

[Exploring the Impact of Trace Elements and Heavy Metals on Colon Cancer](#)

Seerwan Hamadameen Sulaiman, Halit Demir/ 736-743

[Monocyte/High-Density Lipoprotein Ratio as an Inflammatory Marker in Patients with Irritable Bowel Syndrome](#)

Çağdaş Erdoğan, İbrahim Ethem Güven, Batuhan Başpınar, Zeki Mesut Yalın Kılıç/ 744-748

[Evaluation of traditional methods applied by mothers in infant care: A comparison between Turkish and Lebanese mothers.](#)

Nevin Cambaz Kurt, Ayten Güner Atayoğlu, Wassim Bekraki, Habip Balsak, Ali Timuçin Atayoğlu/ 749-759

[The Relationship Between the Presence of Distal Collateral Lymphatic Flows and Obesity in Patients with Bilateral Lower Extremity Edema](#)

Sule Ceylan/ 760-764

[Macroanatomical investigation of sciatic nerve in rat and quail as a model for experimental medical studies: A comparative study of anatomy](#)

Erengül Boduç, Ertuğrul Allahverdi/ 765-771

[Biliary Carcinoembryonic Antigen \(CEA\) Levels: The Role in Detection of Occult Hepatic Metastases in Colorectal Carcinoma](#)

Sunay Şengezer, Fikret Aksoy/ 772-778

[Evaluation of the Relationship Between Peak Growth Hormone Response to Growth Hormone Stimulation Tests and Body Mass Index](#)

Eren Er, Ferda Evin/ 779-783

[Energy Devices in Thyroidectomy: A Safe and Effective Alternative to Conventional Methods](#)

Tolga Onder, Merih Altıok/ 784-787

[Exploring the Role of DICER1 Mutations in Ovarian Sex Cord-Stromal Tumors: A Retrospective Analysis and Implications for Surveillance](#)

Ülkü Miray Yıldırım, Doğa Dalay, Ozlem Dural, Ismail Yilmaz, Neslihan Karakurt, Egemen Eroğlu, Semen Önder, Kris Ann P. Schultz, Rejin Kebudi/ 788-791

[A Decade Trends in Total and Sex-specific Cerebrovascular Disease Mortality in Turkey: 2013-2022](#)

Serdar Aykaç/ 792-796

[Evaluation of COVID-19 Pneumonia in Children According to the Original Strain, Alpha, Delta and Omicron Variants](#)

Edanur Yeşil, Murat Yaman, Berfin Özmen/ 797-802

[Assessing Metastasis through Positron Emission Tomography \(PET\): An In-depth Analysis and Mapping of Thematic Clusters and Prevailing Topics in Nuclear Medicine Research](#)

Hamdi Afşin/ 803-817

[Turkish validity and reliability study of the Infection Prevention Behavior Scale of Individuals \(IPBS-I\)](#)

Sibel Tunç Karaman, Gamze Keskin/ 818-824

Contents

Research Article

[Protective Effect of Etanercept in Experimentally Generated Acute Kidney Failure](#)

Mehmet Kara, Mehmet Fatih Sönmez, Hasan Basri Ulusoy/ 825-830

[Diagnostic accuracy and importance of Fine Needle Aspiration Cytology in the prediction of malignancy in thyroid nodules](#)

Hasan Atlı, Ramazan Dayanan/ 831-837

[Rapid Isolation of Mononuclear Cells with High Yield from Minimal Blood Volumes: A Simplified and Robust Approach for Immunotherapeutic Applications](#)

Sudhir Bhatia, Gudrun Baersch/ 838-841

[Vitamin D Levels and Diabetes Mellitus: A Study on Age, Sex, and Body Mass Index](#)

Enver Çiftel, Serpil Çiftel, Ramazan Dayanan, Hasan Atlı/ 842-848

[Rare Medico Legal Cases of Pediatric Intensive Care Unit](#)

Serbülent Kılıç, Arzu Oto/ 849-854

[Bibliometric Study on Geriatric Emergencies: Intellectual Structure, Prominent Themes, and Future-Directing Topics](#)

Feruz Turan Sönmez, Ayhan Tabur/ 855-867

[Dental Anxiety in Children with Epilepsy: The Influence of Parental Anxiety and Medical History](#)

Merve Abaklı İnci/ 868-872

[Holistic Approach In Stroke Patients: A Clinical Trial](#)

Abdulahap Kaya, Ali Timucin Atayoglu/ 873-878

[Evaluation of The Effects of Dexmedetomidine against Carbontetrachloride-Induced Nephrotoxicity via Oxidative Stress and Apoptosis](#)

Eyup Dil, Levent Tumkaya, Tolga Mercantepe, Zehra Topal Suzan, Kerimali Akyildiz, Adnan Yılmaz/ 879-885

[The effect of various file systems on postoperative pain in primary Tooth Root Canal treatments: A randomized controlled clinical trial](#)

Hemra Nur Özaşık, Merve Abaklı İnci/ 886-893

[The Relationship of Carotid Artery Plaque and Stenosis with Microemboli](#)

Uğur Burak Şimşek, Mehmet Fatih Özdağ/ 894-900

[Mortality Attributed to Central and Peripheral Nervous System Disorders: A Five-years Comprehensive Review from Turkey](#)

Ceyda Hayretdağ/ 901-906

[Neuroendocrine Tumor of The Appendix: Retrospective 7266 analysis of Appendectomy Patients in a single center](#)

Merve Tokoçin , Serhat Meriç, Talar Vartanoglu Aktokmakyan, Haşim Furkan Güllü, Nihat Buğdaycı , Kamil Özdoğan , Onur Tokoçin, Osman Bilgin Gülçüçek/ 907-910

Contents

Research Article

[Effect of Dynamic Cycles and Abutment Angle on The Screw Stability of Standard and Narrow Implants: An In vitro Study](#)

Mehmet Esad Güven, Aslihan Usumez/ 911-917

[The Assessment of Cynicism and Burnout Syndrome Among Nurses; A Descriptive Study](#)

Gizem Akyurt, Sibel Dogan/ 918-928

[What are the Factors Affecting Psychosocial Adaptation to the Disease in the COVID-19 Pandemic?](#)

Ali Osman Başer, Pelin Ilhan, Havva Sert, Mine Adas, Mustafa Taner Yıldırım/ 929-934

Case Report Article

[Coexistence of Neonatal Bartter Syndrome and Congenital Cutis Laxa, in which a new mutation in SLC12A1 was identified](#)

Fatih İşleyen, Dilek Ulubaş Işık, Ayşen Sumru Kavurt, Arslan Bayram, Ahmet Yağmur Baş, Nihal Demirel/ 935-938

[Venous thromboembolism recurrence and intracranial hemorrhage in the cancer patient: A fatal course](#)

Kudret Selki, Mehmet Cihat Demir/ 939-941

[Panniculitis; A Rare Cutaneous Manifestation of Sjögren's Syndrome](#)

Merve Nalbant, Gamze Akbaş, Yunus Özcan/ 942-944